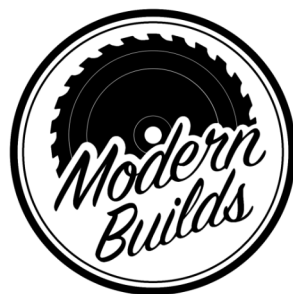
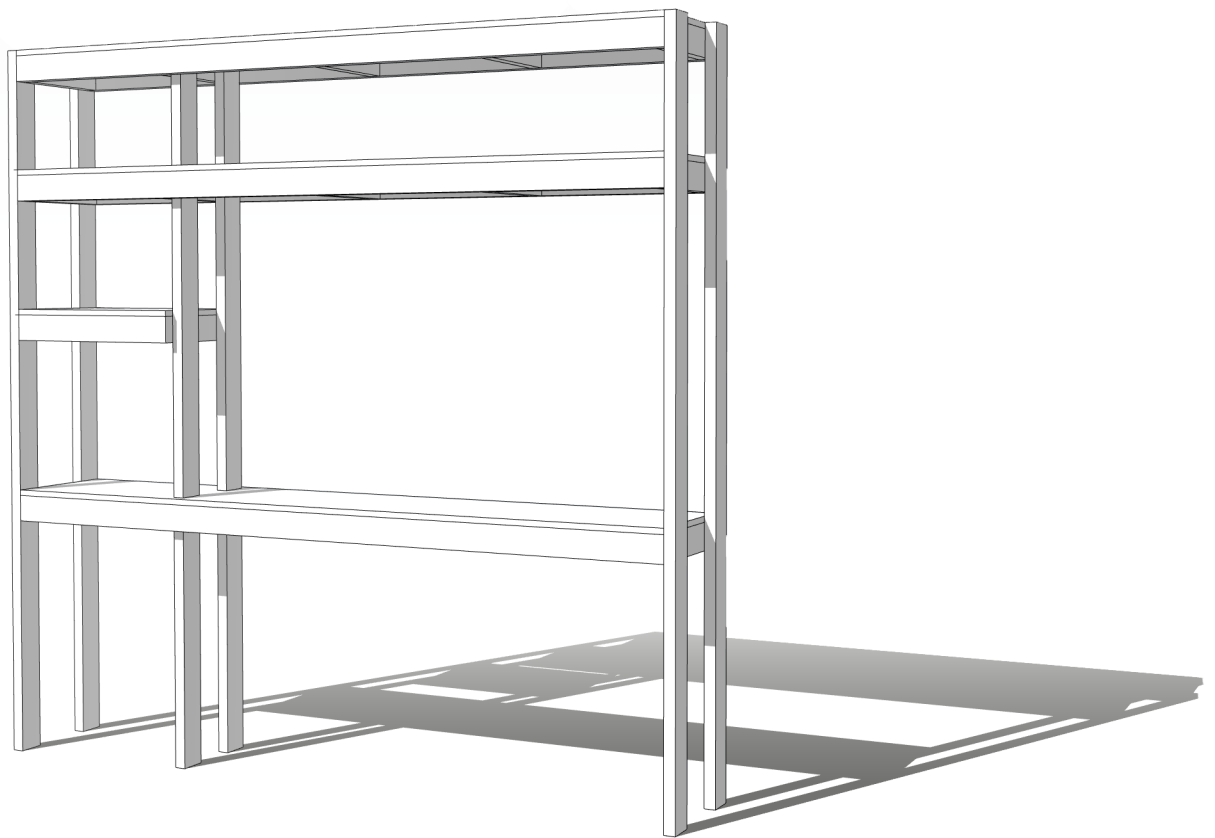


DIY GARAGE SHELF / WORKBENCH



**FULL VIDEO TUTORIAL ON YOUTUBE...
JUST SEARCH MODERN BUILDS**

Dimensions are totally adjustable, I built my workbench the way I did to fit the tool storage and boxes I have. Tag me on instagram if you build one: @modernbuilds

CUT LIST:

Legs: 6 @ 96"

Shelves: 6 @ 96"

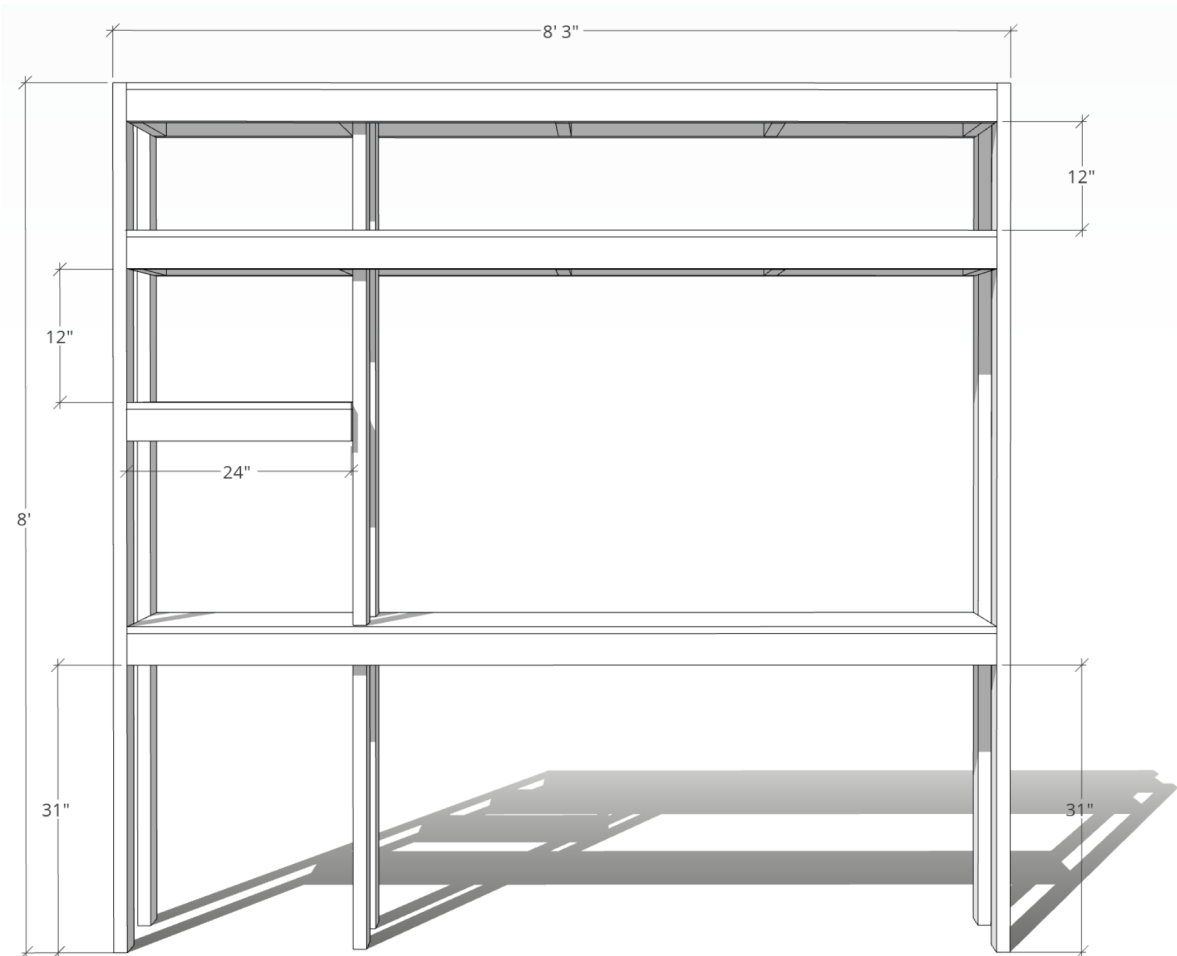
15 @ 16"

2 @ 24" (small shelf)

PLYWOOD:

3 @ 16"x96"

1 @ 16 x 24"



I'd reccomend cutting the middle legs after assembly so that they're "cut to fit"

If you add sawhorses make sure that the bottom of your workbench 2x4 is at the same height as your workbench when extended.

@modernbuilds